



A Cautionary Tale for the Ring of Fire

For nearly ten years, there has been much talk about the enormous potential for economic development represented by the Ring of Fire in Northern Ontario. While there is no denying the enormous untapped value of this resource, there exist many challenges and obstacles – some known and some yet to arise – to its development, and consequently it could take what may seem like a very long time to realize this goal.

Dr. Mark Kuhlberg, Laurentian University history professor, uses the early history of the pulp and paper sector in Dryden, Ontario, to provide an object lesson about the reality of natural resource development projects in Northern Ontario.

According to Kuhlberg, the Dryden mill took decades to reach full capacity. He writes, "Although it had first been conceived as a project in the early 1900s, it was only during the 1950s that it began to exploit fully the natural bounty that surrounded it. This process was delayed for so long by a complex mix of local, provincial, national and international factors, and other forces." Sound familiar?

The commentary, From Resource to Revenue: Dryden Mill Lessons for the Ring of Fire, provides a brief snapshot of the early development of the Dryden Paper Company in order to highlight some forestry history in Northwestern Ontario, but more importantly, to temper some of our expectations regarding the Ring of Fire.

With the Ring of Fire question, Kuhlberg writes, "the political landscape is, in many ways, even more complicated for resource industries today than it was during Dryden Paper's first few decades of existence." While it is important we see a more concerted effort to overcome these challenges, Kuhlberg's cautionary tale is important reading for those "who are prone to pinning their hopes for Northern Ontario's future prosperity on the rapid realization of potential mining developments such as the Ring of Fire."

Click here to read the full report
<http://www.northernpolicy.ca/upload/documents/publications/commentaries/resource-to-revenue.pdf>

Tweet Like 0

ABOUT WAWA-NEWS CONTENT TEAM



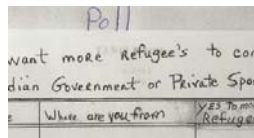
RELATED ITEMS

Letter – Save Wilderness Discovery Day

April 11, 2016

Statement from NDP National Director Karl Bélanger

April 11, 2016



Poll – Refugees?

April 9, 2016

LEAVE A REPLY

Your email address will not be published. Required fields are marked *

@FOLLOW ME

#Hey17 - roads poor from old woman south to Gargantua 8 hours ago

RT @CAO_CWray: Important to consider climate change in asset mgmt @AMOPolicy @LAS_Ontario 2016/04/08

RT @CAO_CWray: Pleased to be presenting at LAS Asset Mgmt Forum today in Muskoka 2016/04/08

OPP extend CLOSURE #Hwy11 (between Hwy 64 Marten River & Highway 66 Kirkland Lake) deteriorating conditions creating a public safety hazard 2016/04/08

OPP have CLOSED #Hwy11 between Hwy573 and Golf Course Rd in Dymond due to deteriorating road/weather conditions & multiple minor mvc's. 2016/04/07

ARCHIVES

Archives

Select Month

Name *

Email *

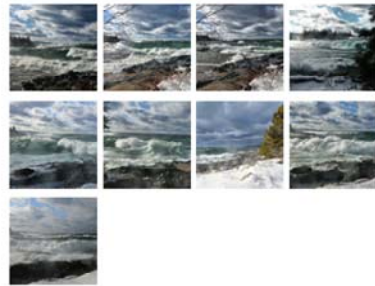
Website

Post Comment

Notify me of follow-up comments by email.

Notify me of new posts by email.

FLICKR



RECENT COMMENTS

[linda nowicki](#) on [Senior's Residence steps closer to becoming a Reality for Wawa and Area](#)

[#RingOffire \(@RoF\) News -- April 4, 2016 | Ring of Fire News on Hughes -- The Devil is in the details with the federal budget](#)

[Linda nowicki](#) on [Hughes -- Will good jobs be a thing of the past?](#)

[Harry Anderson](#) on [Massive offshore powerboats coming to Sault waterfront this summer](#)

[Could Railmark take over passenger train service again? | SaultOnline.com](#) on [Railmark wants to hear from you!](#)

CLOUD TAGS

[10000 Steps](#) [Aboriginal News](#) [Algoma](#)
[Carol Hughes](#) [Chapleau](#) [Charity Hockey](#)
[dec24-Storm](#) [Deer Hunting](#) [First Unit](#)
[Gogama Derailment](#) [Gould](#) [Hockey](#)
[Ice caves](#) [Jett & Loki](#) [Lady Dunn Health](#)
[Legion News](#) [Men's Curling](#) [Michipicobi](#)
[Mike Mantha](#) [Mixed Curling](#) [Moose Hu](#)
[Nipigon Bridge](#) [Nipigon River Bridge](#)
[North East Local Health Integration Network](#)
[Pancake breakfast](#) [Power Dam](#) [pupples](#)
[Rotary Club of Wawa](#) [scams](#) [Searchme](#)
[SE OPP Wawa](#) [Snowcaked](#) [Sports](#)
[Wawa Community Food Bank](#) [Wawa for i](#)
[Wawa Lake Ice](#) [Wawa Police Department](#)
[Wawa Winter Carnival 2016](#) [Weather](#)
[école Saint-Joseph \(Wawa\)](#)